



ISMF Worldcup 2018/2019 – Individual

Skimo Alpencup 2018/2019

Bischofshofen-Hochkoenig ERZTROPHY -

on Sunday, 20th January 2019
Muehlbach – Livingroom Hochkoenig

Announcement



Gen.: 9SM003 **Nat.Federation:** OESV – Ski Austria **Organizer:** Skiclub Bischofshofen 4005 (Phone 004364624845)

Racemode : Individual - Alpine race in breathtaking scenery at the foot of the Hochkoenig

Registration - World Cup: Registration until **15.01.2019** (18.00) on www.ismf-ski.org/register

Registration - Open Class: www.erztrophy.com/anmeldung-registration-skimo-alpencup

Attention: NO Late-Registration possible.

By registering the participant accepts all conditions of the competition and the Rules of the ISMF.

Information:

about the race:

on www.erztrophy.at, www.ismf-ski.org or information per E-Mail: info@erztrophy.at

about accommodations:

TVB Bischofshofen, Salzburgerstr. 1 A-5500 Bischofshofen Phone: 004364622471

E-Mail: info@bischofshofen.com Internet: www.bischofshofen.com

Entry fee - World Cup starter: € 50.- for Senior and Espoir, € 40.- for Junior - Payment upon registration

Entry fee – Open class: € 30.- for Senior und Master, € 20.- for Cadet und Junior, Payment for pick-up bibs

Each participant receives: A starter package with give-aways of the sponsors, list of results (in the internet), Food and beverage voucher and shower facilities at Arthurhaus,

Programm :

19.01.2019	10:00 - 14:00	Individual track inspection on Arthurhaus
	16:00 - 17:00	Eating and drinking in the event tent
	16:30 - 17:15	Opening Ceremony and Presentation of the top athletes at the Ski Jumping area
	17:15 - 18:00	ISMF / Infront Briefing of the World Cup Athletes and Supervisors at the Österreichhaus
	17:00 - 19:00	Race number issue for World Cup at the Österreichhaus
	18:00 - 19:00	Racing briefing for the individual in the race office, Rosental 40, Ski club building
20.01.2019	07:30- 09:15	Race number issue for Open class athletes at the Arthurhaus
	08:45	Starting grid Worldcup Senior / Espoir Men (Equipment controls)
	08:55	Briefing about race course (compulsory for participants Worldcup)
	09:00	Start of the class World Cup Senior / Espoir Men
	09:05	Starting grid World Cup Senior / Espoir Ladies, Junior w + m (Equipment controls)
	09:10	Start of classes Worldcup Senior / Espoir Ladies, Junior w + m
	09:20	Starting grid open classes (equipment controls)
	09:35	Briefing about race course (compulsory for participants open class)
	09:40	Start of the Open Classes Senior w + m, Master w + m, Junior w + m, Cadet w + m
	11:00 - 11:30	Flowerzeremonie World Cup ladies and men in the start / finish area
	12:00 - 13:20	Meal in the Arthurhaus
	ab 13:30	Presentation ceremony World Cup, followed by award ceremony Erztrophy at Arthurhaus

Reglement : Internationale ISMF-Rules (www.ismf-ski.org/webpages/official-texts/sport-regulations/)

All participants must be available for any doping control.

Equipment: Passport or ID card, ski, binding, shoes, poles, 1 pair of skins at least, helmet, backpack, gloves, glasses, avalanche transceiver (3 antennas) Shovel, probe, rescue blanket, whistle, 3. clothing layer upper body, 2nd clothing layer lower body.



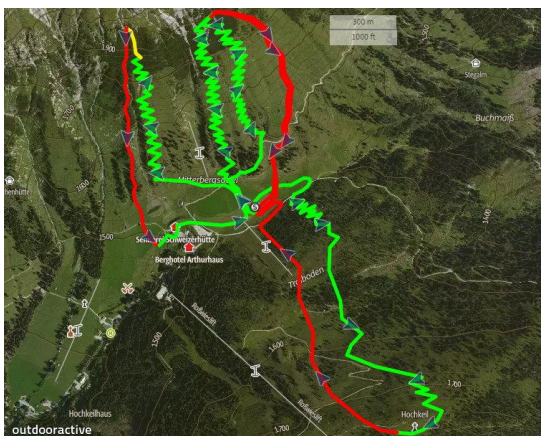
Worldcup class: Junior (1999 – 2001) women/men with ISMF- license
 Women Espoir (1996 - 1998) + Women Senior (- - 1995) with ISMF- license
 Men Espoir (1996 - 1998) + Men Senior (- - 1995) with ISMF- license

Open class: Cadet (2002 – 2004) women and men, Junior (1999 – 2001) women und men
 Women Senior (1974 - 1998), Women Master (1973 – older)
 Men Senior (1974 – 1998), Men Master (1973 – older)

Prize Worldcup : Prize money for the first 5 Senior w + m and the first 3 Espoir w + m,
 Prizes for the first 3 Junior w + m

Prize Open class : Material prizes for the first three classes

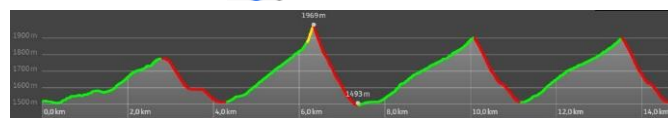
Track: **Worldcup Men / Espoir, Open class Men Senior and Men Master**



Technical Specifications:

Distance 14700 m
Deepest Point 1494 m
Highest Point 1969 m
Tot.Ascent 1525 m

green = Ascen
 yellow = Walking path
 red = Downhi

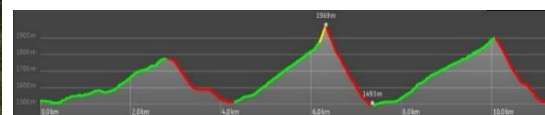


Worldcup Women / Espoir, Junior men, Open class Women Senior and Women Master, Junior men

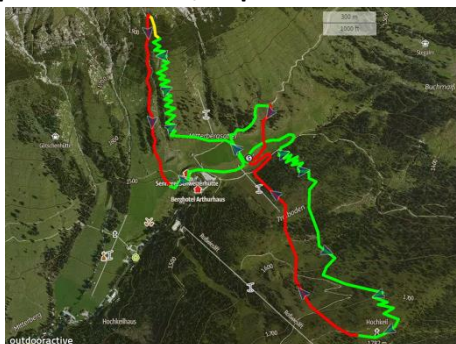


Technical Specifications:

Distance 11300 m
Deepest Point 1494 m
Highest Point 1969 m
Tot.Ascent 1128 m

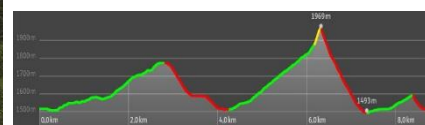


Weltcup Junior women, Open class Junior women, Cadet women and men



Technical Specifications:

Distance 8700 m
Deepest Point 1494 m
Highest Point 1969 m
Tot.Ascent 819 m



Due to weather conditions, the route can be changed. The route is marked with flags, **green = ascent**, **yellow = carrying passage**, **red = descent**. Are danger spots additionally marked with large panels, please take special care here! Leaving the track and that Discarding objects is prohibited and invariably leads to disqualification.



Info : It is an outdoor event in which an accident and injury risk for the Participant exists. Accident and mountain insurance for competitions is therefore recommended. The organizer is not liable for accidents or damage caused to the athletes, attendants, spectators or of objects arising from the event, even against third parties.



First Aid: Mountain rescue Bischofshofen and Muehlbach on Hochkoenig

Parking place: **In the range Arthurhaus only limited parking possibilities Arthurhaus car park: LOC, ISMF, P1 Media and Press, World Cup starter (1-2 cars per nation according to the number of participants, the others with Shuttle (LOC or Team) from P2 Saukarlift.**

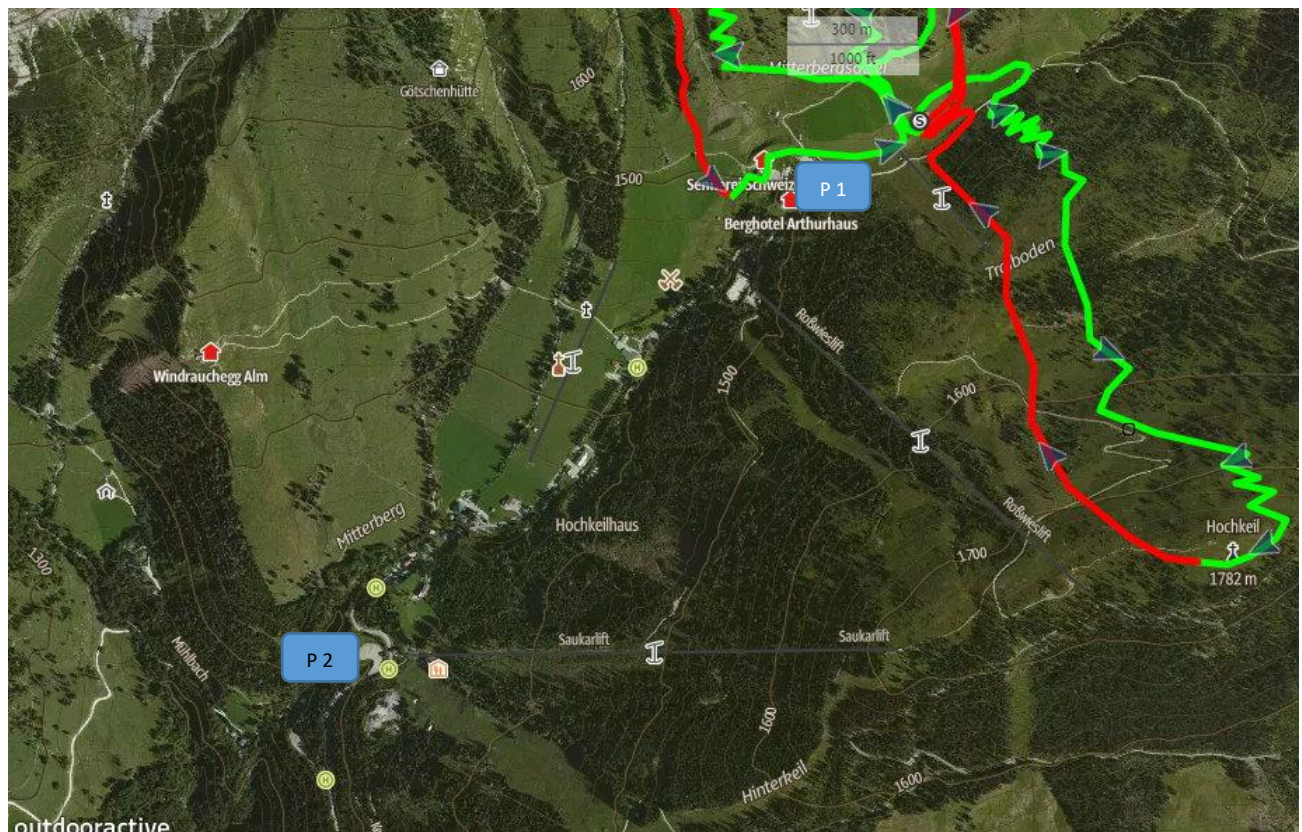
Parking Rosswies: only for public

P2 Parking Saukarlift: World Cup starters -> shuttle 10 min

P3 Parking Muehlbach-Gemeindeamt (GPS 47.377345, 13.122399): participants open classes

Shuttle : Phone +4366488452301

ATTENTION time to schedule !!!



P3 at the municipal office in Muehlbach : With Worldcup Shuttle Departure 08: 15 or bus departure 08:30

The LOC team is looking forward to seeing you again at the Arthurhaus on 20.01.2019.

